

MONTADO AGROFORESTRY A MULTIFUNCTIONAL SYSTEM

Conceição Santos Silva





MAN SHAPED FOREST OF CORK OAK OR HOLM OAK (evergreen oaks)

Represents 31% of the Portuguese forest

Mainly located in the south (farm size > 50 ha)

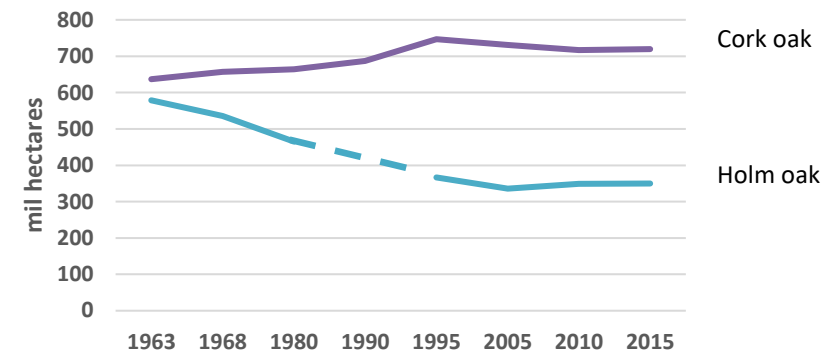
Stabilized area since 2005

Pastures are the main undercanopy use

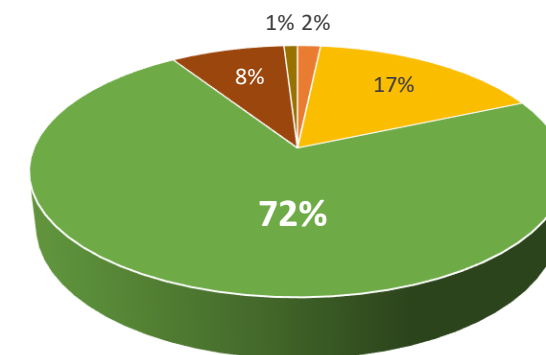
Biggest carbon sink in the portuguese forest (26%)

Protected by law since the 12th century!!

Montados área evolution between 1963 and 2015
(national forest inventories)



Montado agro-forestry



■ Agriculture ■ Shrub ■ Pastures ■ Bare soil ■ Unknown



MULTIPLE USE LOW INTENSITY SYSTEMS WITH...



Cork production



Extensive livestock farming



Key role | Ecological processes



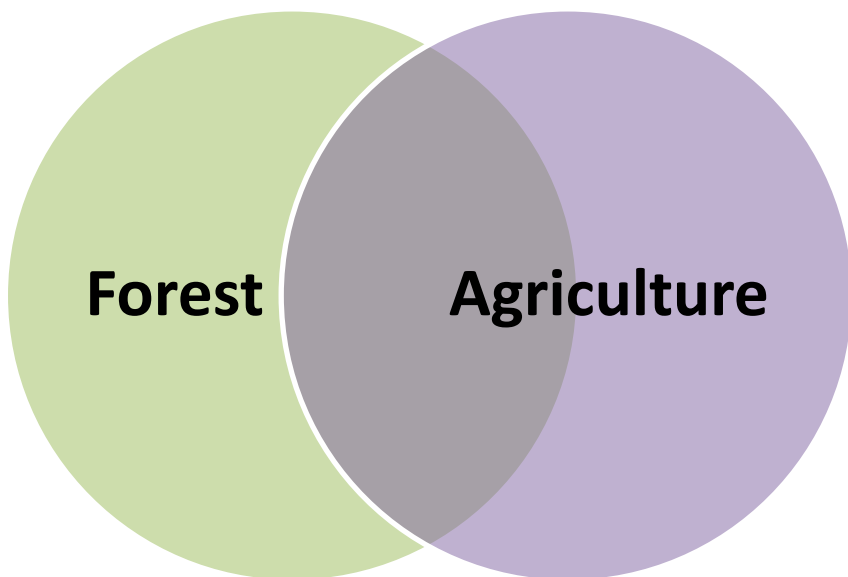
High levels of biodiversity



Rural employment

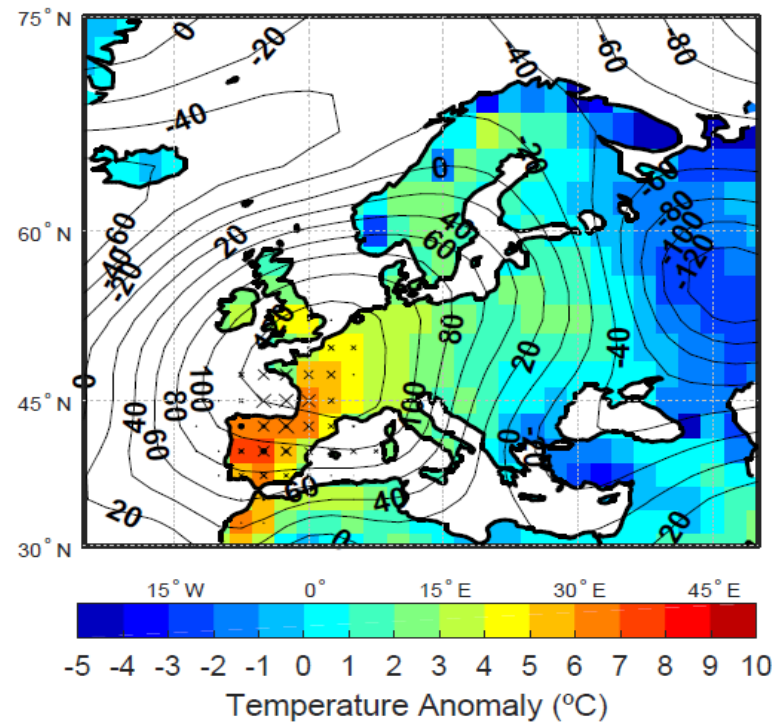


Very long term investment return



1. Forest & Agriculture detachment

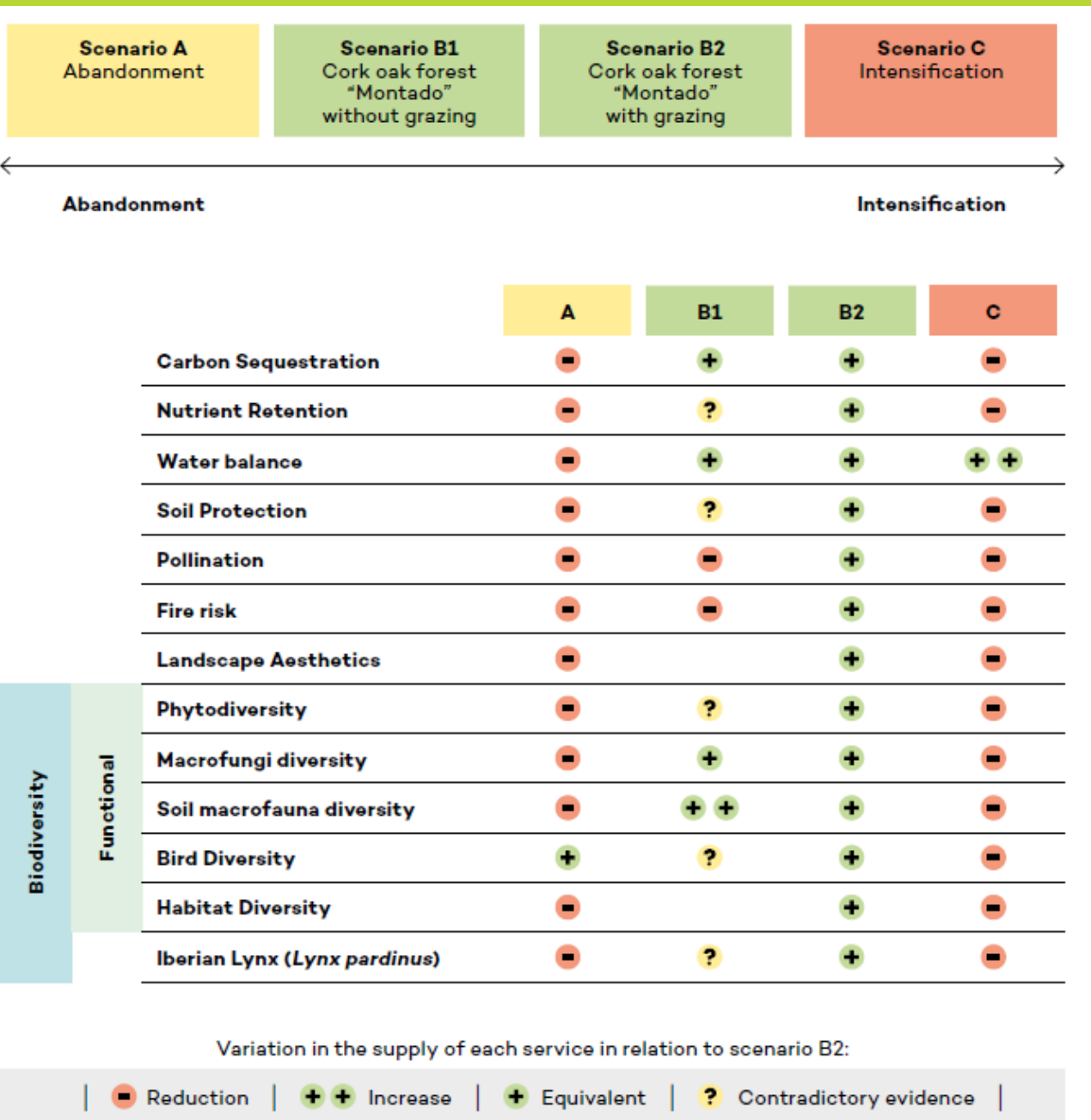
* source: Sánchez-Benitez et al, 2018



2. Climate adaptation & mitigation*



3. Economic sustainability



- Being **B1** and **B2** the *Montado* systems (without and with livestock, respectively)
- The green crosses represent the ES provision
- The ES provision generally diminishes in the scenario of abandonment (**A**)
- The ES provision generally diminishes in the scenario of intensification (**C**)
- 3 of the 9 ES evaluated represent 194€/ha/year (cork oak forest)



1. THE SURVIVAL OF THE AGROFORESTRY SYSTEMS REQUIRES “FOREST AND AGRICULTURE” NOT “FOREST OR AGRICULTURE”

2. THESE ARE SYSTEMS OF VERY LOW INTENSITY, ECONOMICALLY FRAGILE, THAT NEED THE RIGHT FINANCIAL SUPPORT TO AVOID ABANDONMENT OR OVER EXPLOITATION

3. ECONOMIC REWARD OF THE EXTERNALITIES

- European recognition of the:
 - Forest singularity (long term economic activity)
 - Forest increasing requirements by the society
 - Forest public goods (carbon, water, soil, biodiversity, climate)
- Rural Development Program (2021-2027) with:
 - specific measures adapted to forest needs and expectations
 - appropriate budget to the EU forest targets
 - appropriate support rates
- Forest insurance policy
 - an economic activity & professional management must have access to an affordable insurance system.



**UNAC – Mediterranean
Forest Union**

Conceição Santos Silva

mcssilva@unac.pt

www.unac.pt

Thank You!